



THE

ART

OF

TROUBLESHOOTING

# 3 Easy Steps to Great Wi-Fi Every Day



Step 1

A Great Network Starts with a Great **DESIGN**



Step 2

**VALIDATE** with Super Accurate Sidekick Measurements



Step 3

Maintain Great Wi-Fi with Regular **HEALTH CHECKS**

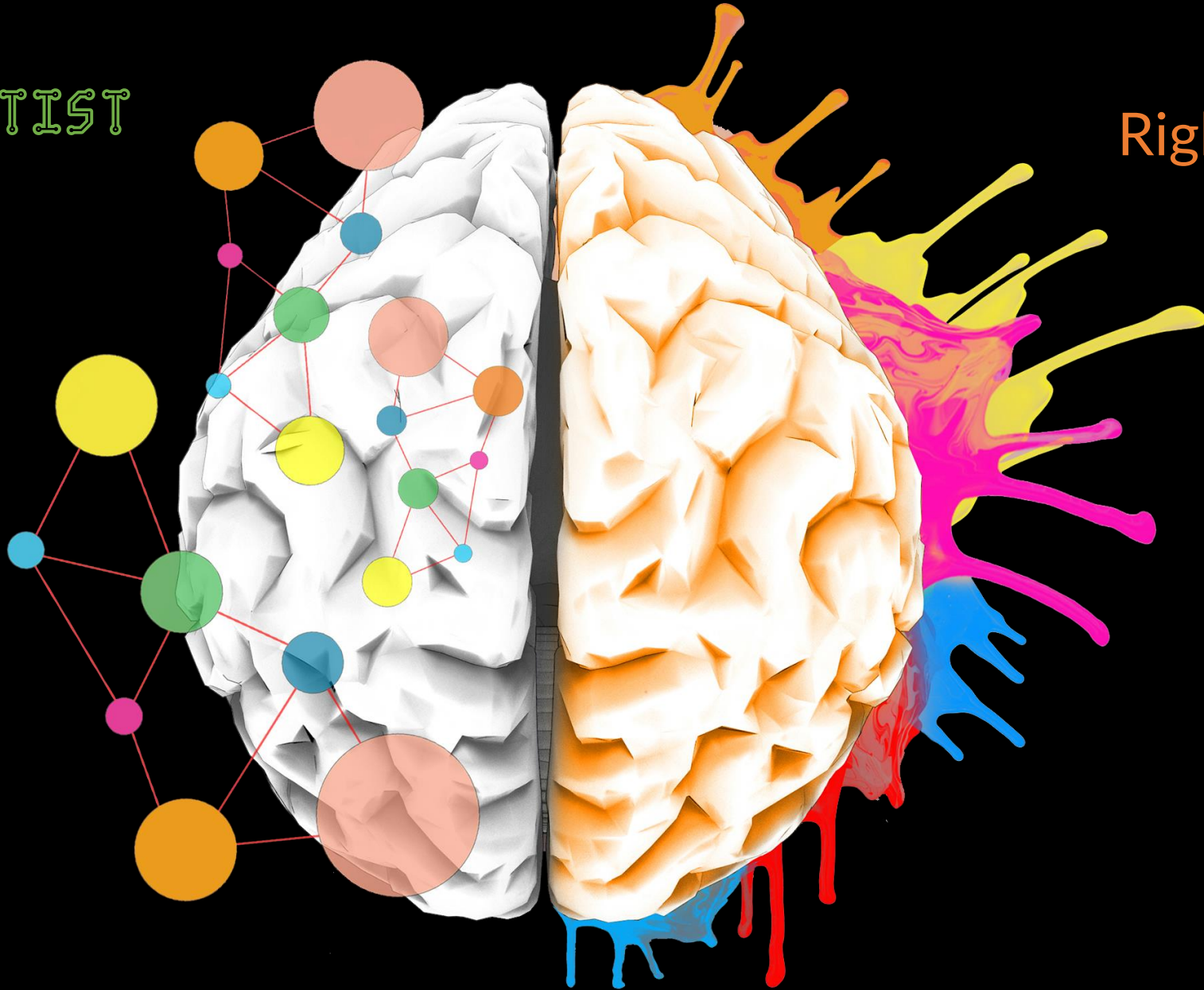
**Troubleshooting**

**is both** **SCIENCE**

**and** **ART**

## Left : SCIENTIST

Mathematical  
Analytical  
Logical  
Linear



## Right : ARTIST

Creative  
Passionate  
Imaginative  
Sensual











# Question

# Answer

Is the issue related to the 2.4GHz band?

~~Don't know~~ Yes

Does the issues exist if clients connect to the 5GHz band?

No

**Test: Connect client device to 5GHz**

~5ms

Non Wi-Fi interference in the 2.4GHz band?

No

Too many radios?

Yes

**Test: Disable 50% of radios**

~150ms

What is biggest cause of congestion in high CCC environments?

Management overhead

How do we reduce management frame overhead?

Increase MBR

What is the current MBR?

1Mbps

What MBR shall we use?

~~Don't know~~ 12 Mbps

Are there any 802.11b-only devices?

No

Will any devices not operate without 802.11b data rates enabled?

~~Don't know~~ No

**Test: Disable 802.11b rates**

~25ms

**Test: Set MBR at 12Mbps**

~15ms



**UKWifiGuys**

ukwifiguys.slack.com

<https://tinyurl.com/UKWiFi>



