



WI-FI DESIGN IN HIGHER EDUCATION

**MATT SEYMOUR
HPE POINTNEXT**

UNIVERSITIES ARE POSSIBLY THE BEST PLACE TO LEARN WI-FI





AFAP2

010A/001 010A/002

105

PWR ENET 11A/N 11B/G/N



UNIVERSITY
of York





Photo: Tim Green



Photo: John Robinson



Photo: Dearg Doom



Photo: Char

REQUIREMENTS

Which devices
need to do what
and where?



**CLIENT DEVICES
YOU HAVE ZERO CONTROL**



MOST IMPORTANT, LEAST CAPABLE

- Cheap Chromebook?
 - Raspberry Pi?
 - Cheap smartphone?
 - 2.4GHz only laptop?
-
- Target -60dB in Ekahau designs



An aerial, high-angle photograph of a busy university campus. A wide, paved walkway runs diagonally from the bottom left towards the top right. Numerous students are walking along this path, some carrying backpacks. To the left of the walkway is a large, well-maintained green lawn. To the right, there are trees with bright yellow autumn foliage. A white lamppost stands near the trees, and a bicycle is parked nearby. The scene is brightly lit, suggesting a sunny day, with long shadows cast across the pavement.

USER REQUIREMENTS AND EXPECTATIONS

USER REQUIREMENTS AND EXPECTATIONS

Students in:

- Study bedrooms
- Shared study space
- Lecture theatre

Administrative staff

Researchers



FOUR CATEGORIES

Administrative – baseline

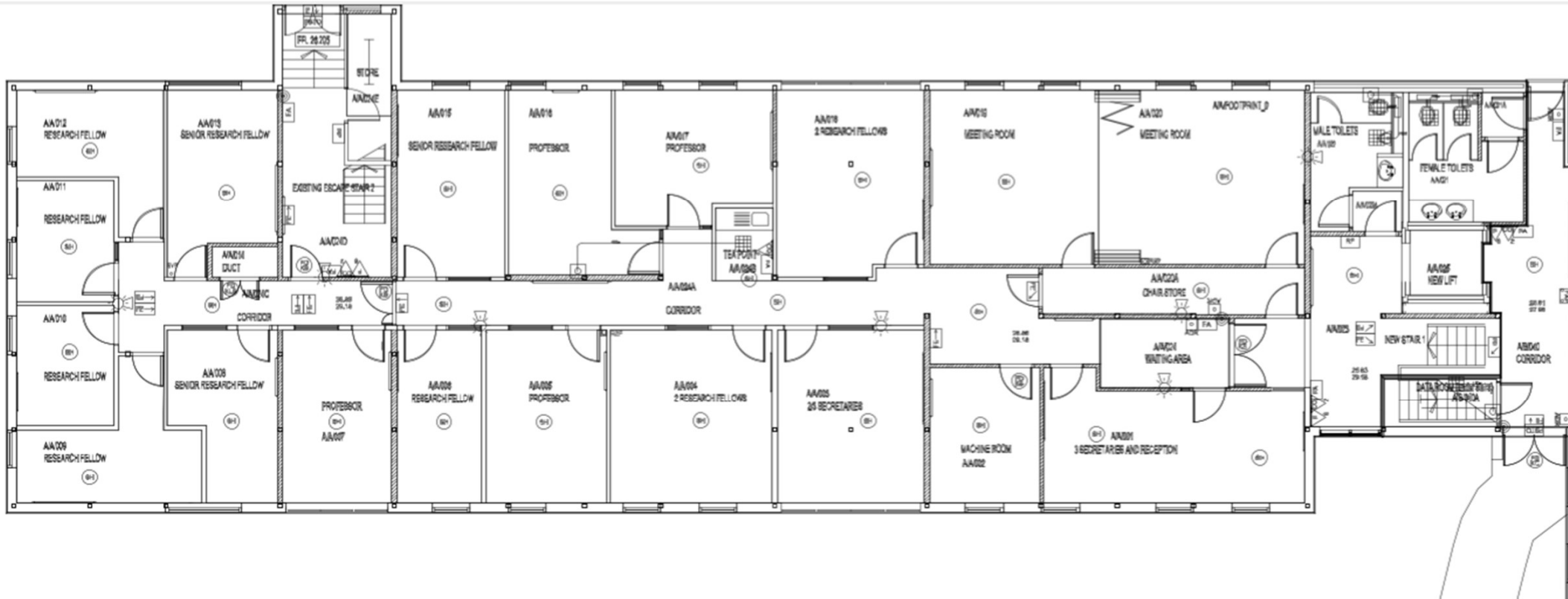
Domestic – high bandwidth

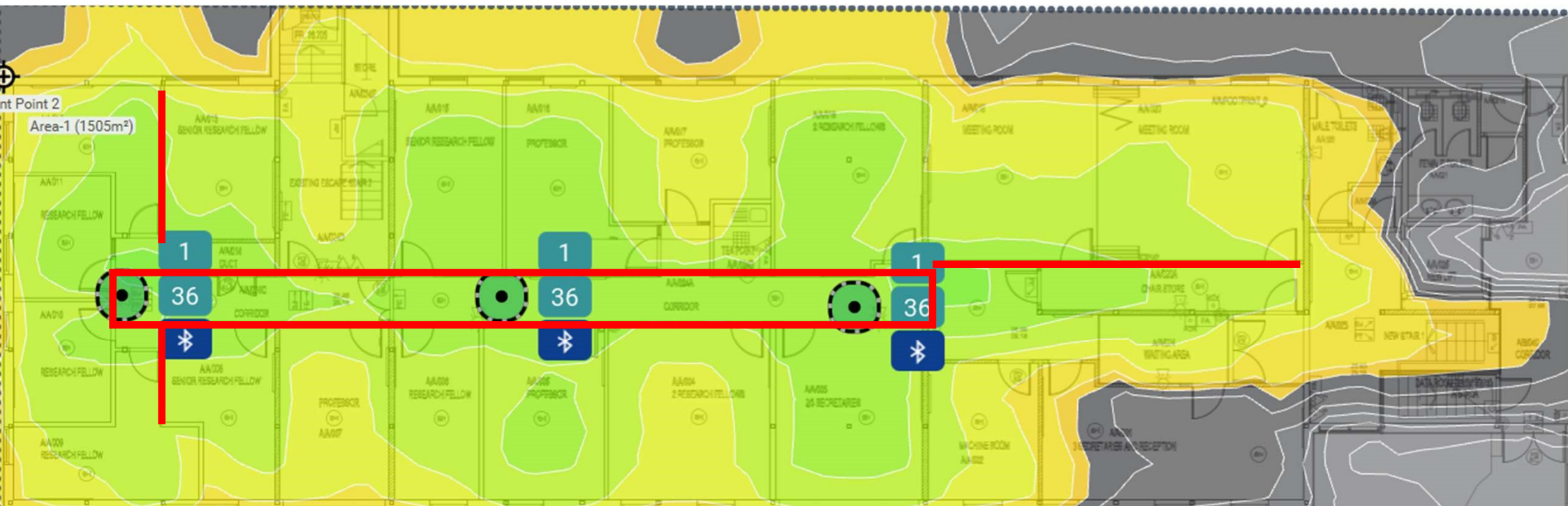
Research – anything goes

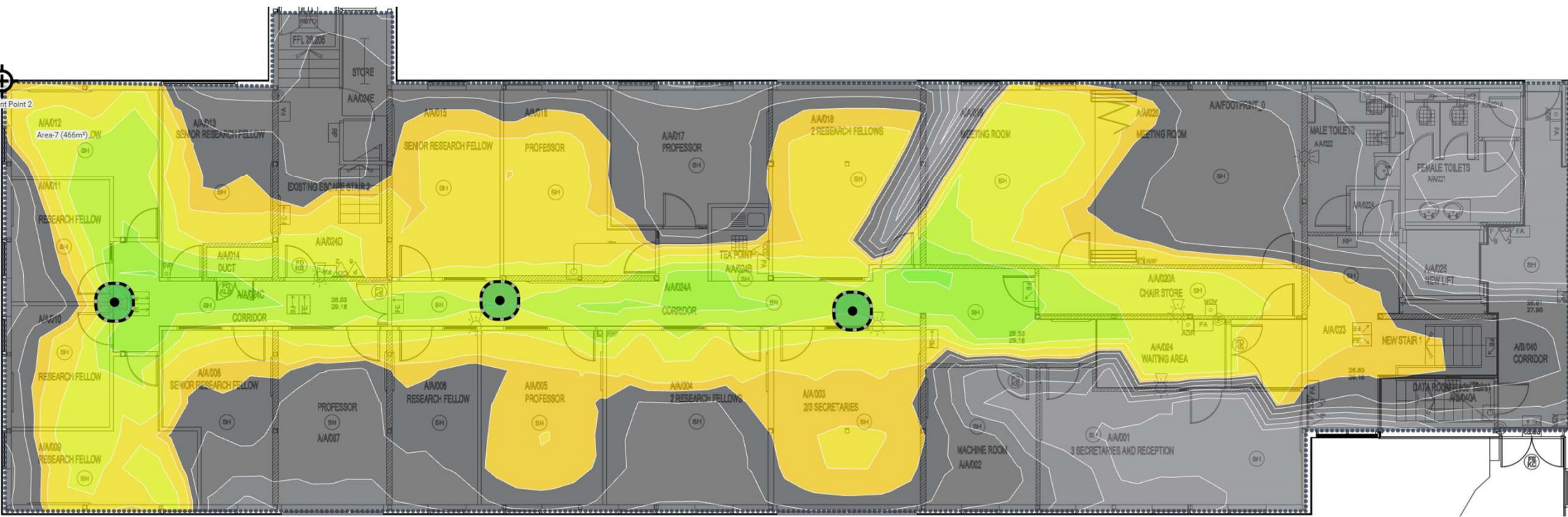
High density – numbers and/or throughput

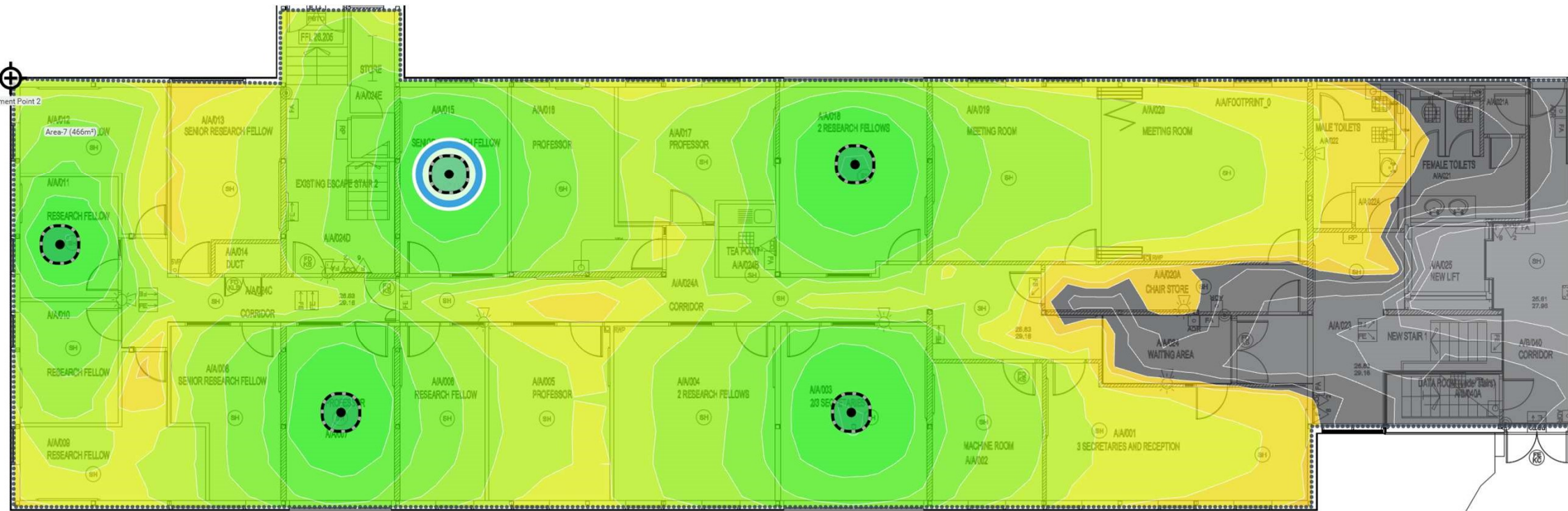








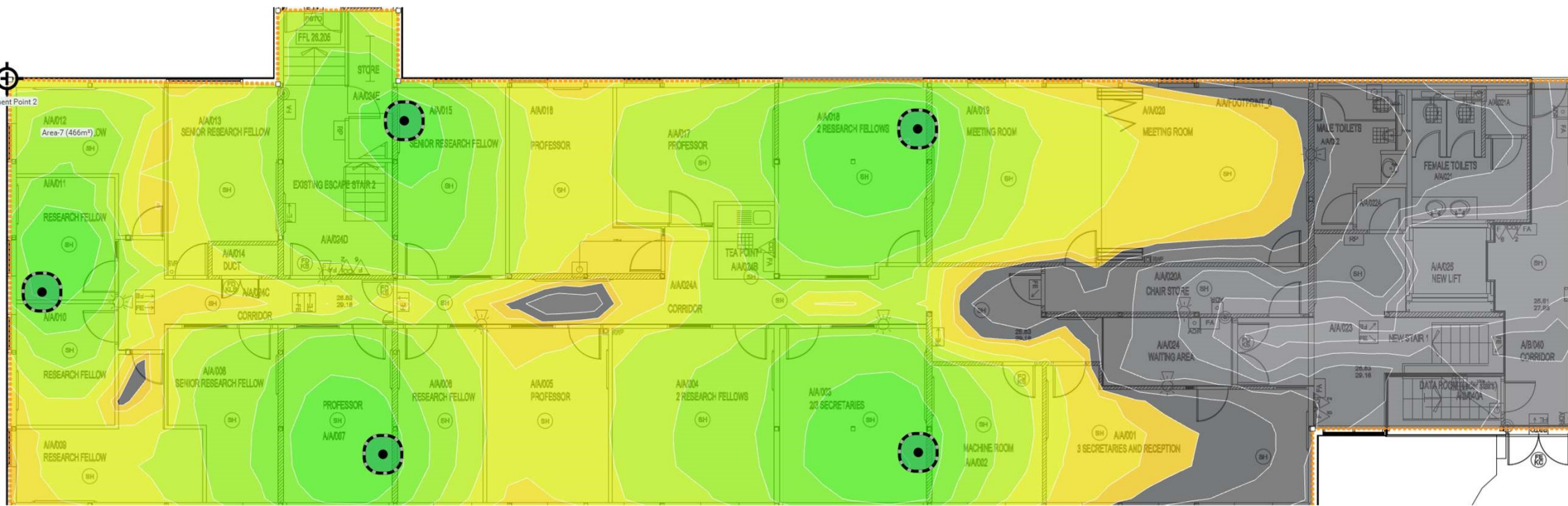


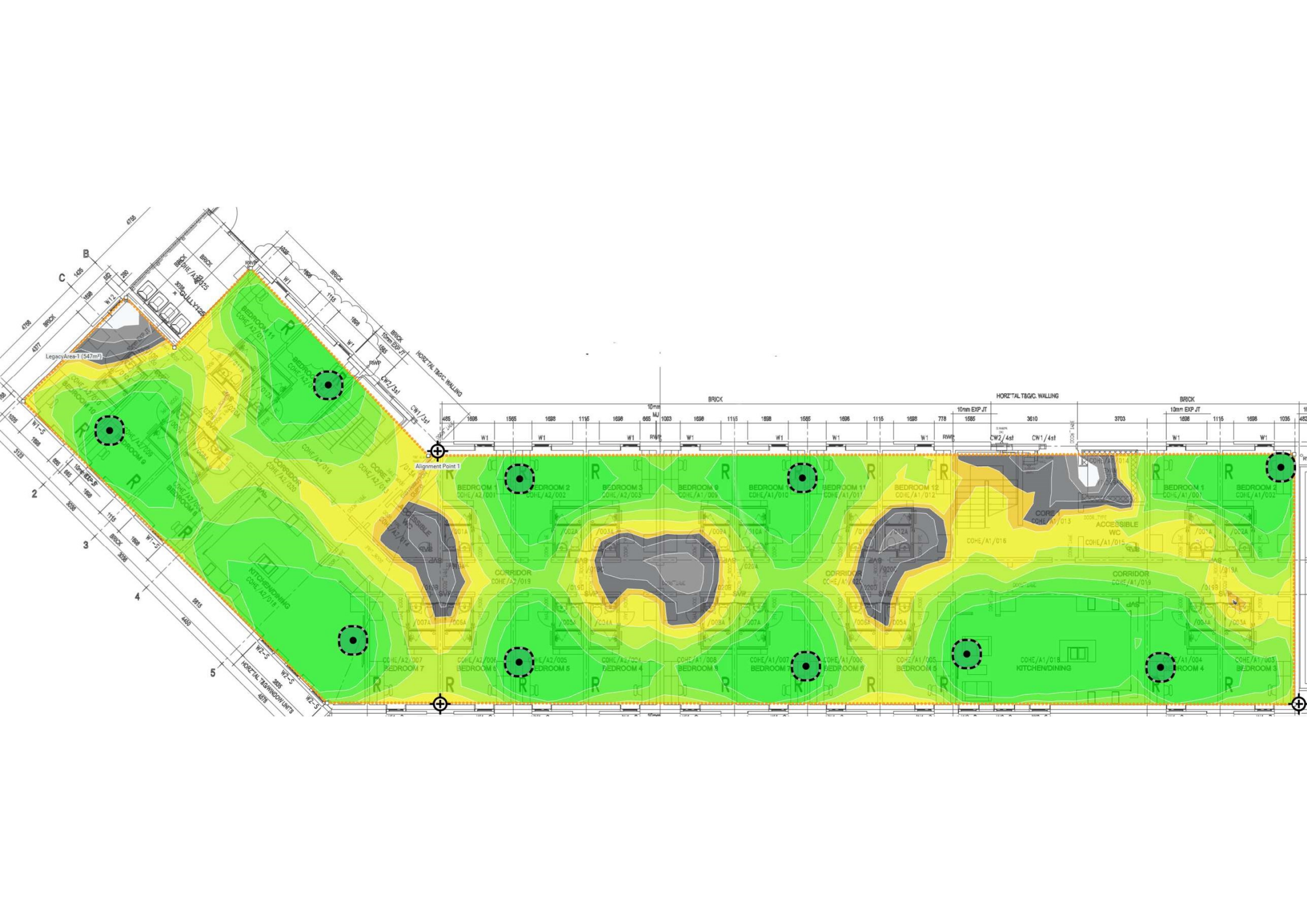


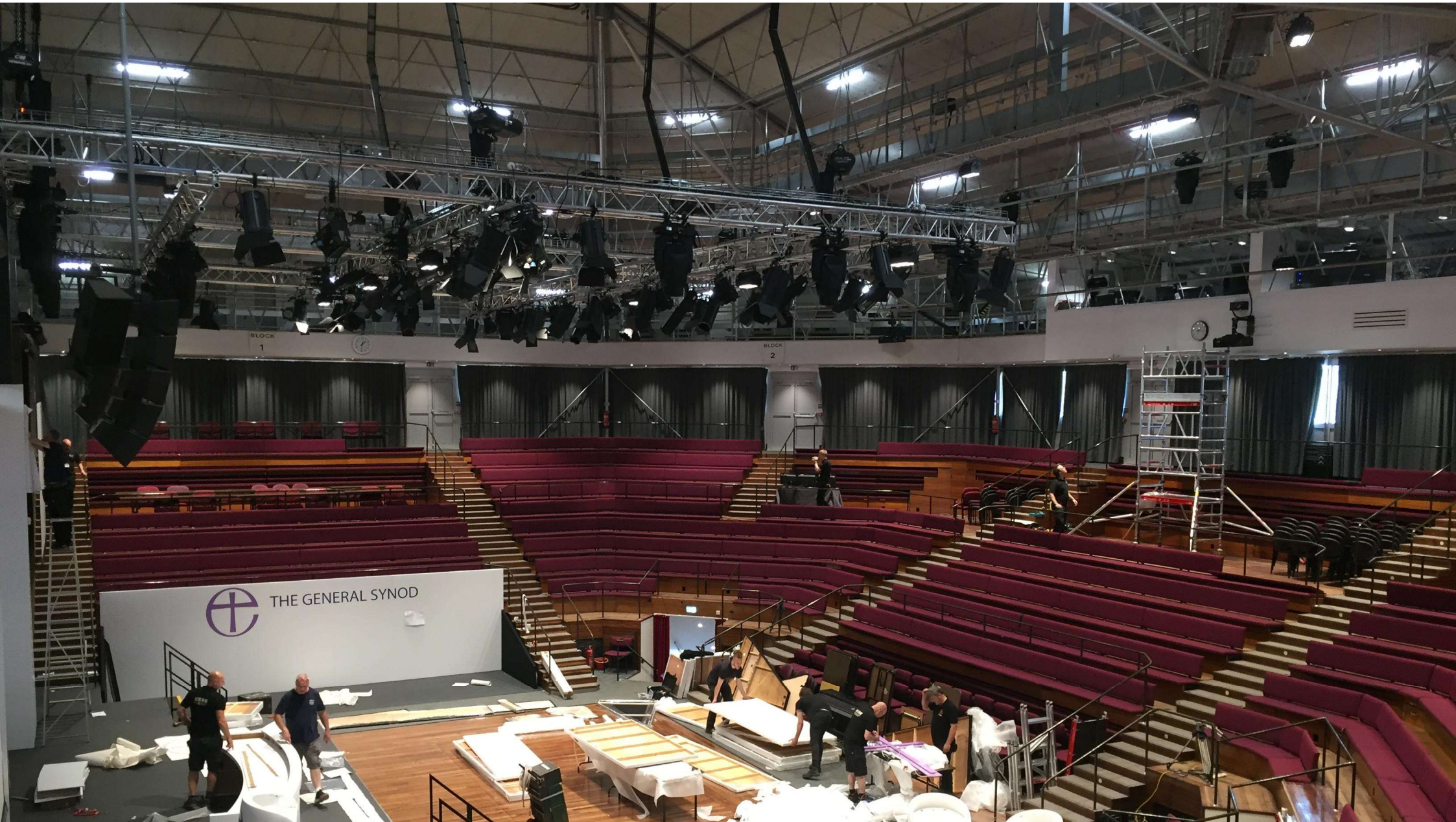
HOSPITALITY/ WALLJACK AP



Point 2









An Introduction to

Janna De Groot
students to collect

Fragile
Fris

Lyreco
BUDGET

THAT ESSENTIAL NETWORK STUFF

- Users are highly mobile – layer3 roaming is highly problematic
- Backend infrastructure must be appropriately sized
 - DHCP
 - DNS
 - Routing Switch tables



USER REQUIREMENTS BEFORE POLICY



Users in HE will ignore policy and implement their own solution if you don't help them

Temporary or ad hoc solutions present a risk to the network and create more of a support burden

By standardizing and templating as much as possible, unique requests can be accommodated