

Network Instruments® PRODUCT PROFILES

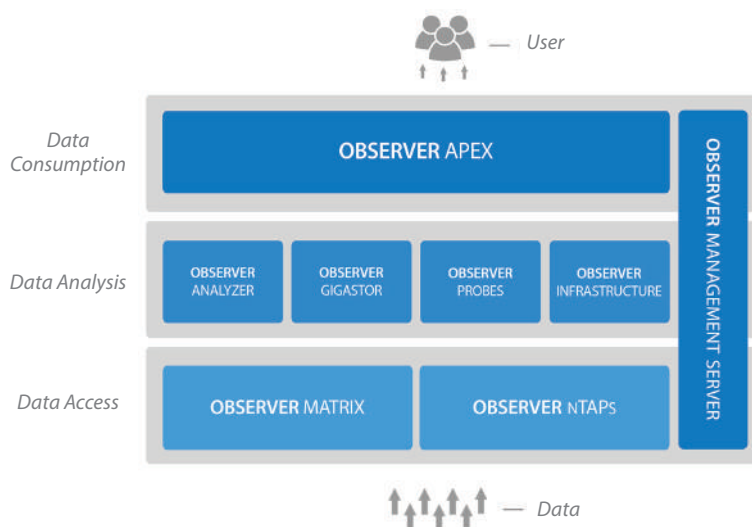
Validate IT Success, Optimize Performance

Critical business processes, from project collaboration to product delivery are supported at every point by IT services. Failure of the underlying applications and infrastructure is not an option. For IT to be successful, it must have a method of monitoring operations, optimizing performance, and validating investments.

Observer Performance Management Platform

The Observer® Platform is a full-service IT solution for optimizing application and network performance management. Each part of the system fits together with all other components to:

- Manage application delivery and performance
- Gain complete views into mixed and shared UC environments
- Monitor performance across virtual, physical, and cloud environments
- Ensure successful technology and application rollouts
- Assess key data center initiatives
- Resolve problems before user impact
- Meet long-term corporate needs



“ The synergy with Observer Analyzer, GigaStor, and OI is very beneficial for our network. It’s the best return on investment we’ve ever seen from a network management solution. ”

- Peter Van Rietvelde

Network and Systems Engineer | AZ Sint-Jan Brugge-Oostende Hospital

Achieve Global Infrastructure Visibility

- Gain enterprise-wide views of IT performance
- Combine multiple views into a single dashboard
- Resolve problems by drilling into detailed metrics

Identify and Resolve Performance Problems

- Prioritize problems based on severity and impact
- Immediately isolate the problem source
- Speed troubleshooting with Expert Analysis

Plan for Long-Term IT Operations Growth

- Trend bandwidth use over time
- Assess long-term application and network performance
- Determine and justify new infrastructure investments

Optimize App Delivery & Performance

- Automatically discover, track, and analyze up-to-the-minute performance
- Identify and understand application dependencies
- Instantly identify long latency and response times

Ensure Project Success

- Assess impact of new technology on network and applications
- Set benchmarks and baseline performance
- Proactively manage performance deviations

Observer Apex

Enterprise-Wide Performance Management

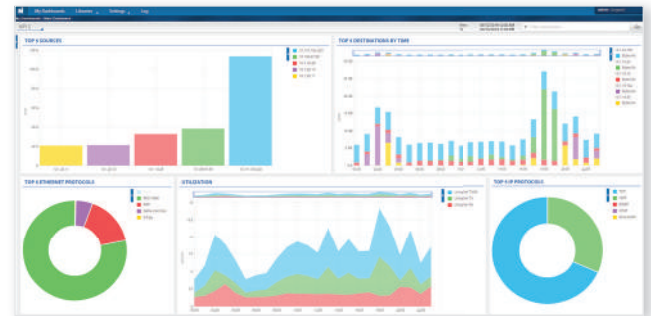
Apex™ is a stand-alone appliance that simultaneously collects and aggregates data from Probes, NetFlow devices, and other collection agents. Combine Apex with GigaStor™ and Observer Infrastructure (OI) to gain long-term views of network activities and to correlate network and infrastructure performance. Apex can be quickly deployed and works seamlessly with Analyzer consoles, OI software, and the GigaStor appliance.

- Prove IT success to management with robust reporting
- Assess application service availability at a glance
- Track cloud performance and verify SLAs
- Navigate from user-friendly dashboards to root cause quickly
- Resolve problems with intuitive workflows and Expert Analysis

APEX HARDWARE APPLIANCE



Combines flow, captured packets, system health, and expert analysis for overall service health view.

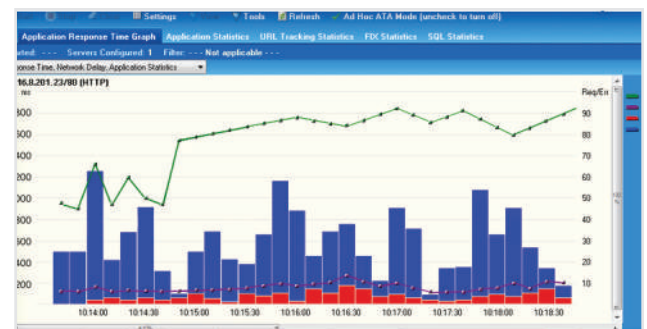


Observer Analyzer

The Industry's Most Powerful Analytics

Analyzer is often integrated with GigaStor, Apex, and OI to increase management performance power. It's used with GigaStor for long-term data capture and in-depth analysis of historical events, forensics analysis, and stream reconstruction. Analyzer is paired with Apex for high-level or aggregate reporting, enterprise-wide reporting, and global alerting. When coupled with OI, Analyzer filters captures on devices. It also connects with larger enterprise initiatives, including integration with IBM® Tivoli® and HP® OpenView®.

- Automate problem isolation and resolution with over 700 Experts
- Monitor application communications, errors, and response times
- Track VoIP and video performance quality on a per-call or aggregated basis
- Gain app-specific details across the enterprise



Observer GigaStor

Improve Uptime with Back-In-Time Analysis

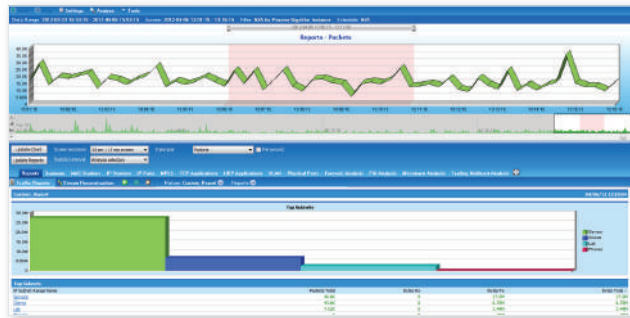
GigaStor is available in an array of form factors, network speeds, port counts, and capacities that range from 4 TB to over a petabyte. GigaStor can be paired with Analyzer for in-depth analysis. To ensure wire-speed and line-rate capture, each appliance includes the Network Instruments unique full-duplex Gen2™ capture card with multiple link support.

- Capture, save, and replay over a petabyte of data
- Obtain long-term analysis of performance and growth for capacity planning
- Rewind the network to troubleshoot intermittent issues
- Baseline and evaluate application rollouts
- Supports 10 Gb and 40 Gb data center environments

GIGASTOR HARDWARE APPLIANCES



Retrospective network analyzer troubleshoots with speed and precision, capturing over a petabyte of data.



Observer Infrastructure

Active Resource Monitoring Across the Network

OI converts data into actionable information through flexible reporting and intuitive mapping visualization. Its exceptional stand-alone polling capabilities are often coupled with Apex to optimize and unify the Observer Platform. When connected with both Apex and GigaStor, OI delivers even greater management IQ, including functionality that locates correlations between seemingly unrelated events – saving hours of troubleshooting time and accelerating issue resolution.

- Easily assess impact of infrastructure performance on overall enterprise
- Correlate virtual resource and desktop performance with physical hosts
- Obtain network-wide monitoring of device and application performance
- Monitor cloud service metrics and health status
- Improve problem solving by isolating issue to application, network, or device

OI HARDWARE APPLIANCE



Provides critical operational metrics for informed device management.

Monitoring Topology Discovery Inventories Alarmed Devices: 65						
Discoveries: 2011/12/30 10:56:15 Discover now... Tools						
Discovered Map	Discovered Subnets	Discovered Devices	Discovery Reports			
Network Devices	Type	JMX	MySQL	SNMP	Windows	Interface
BG5TEST	Network Device	✓				1
Web1	Computer	✓				1
Workstation	Windows Computer		✓		✓	1
Able1	Network Device	✓				1
Production ColorCube 8870	Printer		✓	✓		1
production-data	Windows Computer				✓	1
QA-ESX.acme.com	Network Device			✓		4
Device vmnic0 at 02:00:00:e1000e1etherne...						

Observer Matrix Network Monitoring Switch

Maximize Your Monitoring Machines

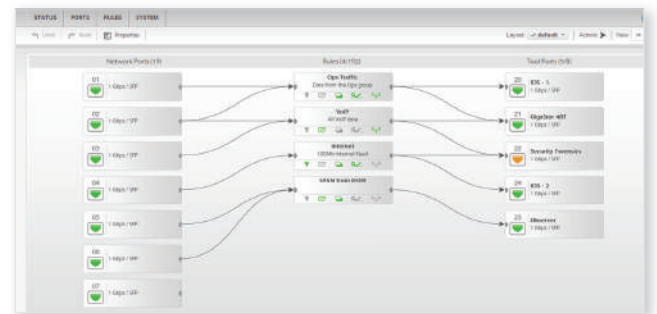
The Observer Matrix™ Network Monitoring Switch is the perfect device to enhance the power of your monitoring appliances. Stop compromising simple configurability or giving up on powerful switch features and functionality. With Matrix, quickly leverage all your legacy monitoring tools and get the right data to the right tool in a timely manner.

- Industry's first rule-based interface makes packet manipulation and filtering a breeze
- Drag-and-drop GUI network-tool port connectivity provides the ultimate in flexible traffic flow configuration, visualization, and management
- Cost-effective design means pay for only those monitoring resources you need while making 24 port expansion simple
- Selectively directing & passing only critical traffic making the transition to 10 Gb less painful

MATRIX APPLIANCE



Uses a modern HTML5 GUI and the best underlying hardware technology for optimal ease of use and performance.



Observer nTAPs

Access Data with Ease and Speed

nTAPs™ are passive devices installed on critical links for 24/7 access to traffic without disrupting data flow. They keep traffic flowing even when power doesn't. With streamlined form factors and an array of configuration options, nTAPs feed network analyzers, monitoring tools, and security devices while decreasing the risk of dropped data. Quick to deploy and economical to implement, network nTAPs provide devices with the comprehensive visibility needed for optimal performance management.

NTAPS HARDWARE APPLIANCES

Aggregator nTAP

10 Mb, 100 Mb, or
1 Gb full-duplex links



Copper nTAP

10 Mb, 100 Mb, or 1 Gb copper links;
choose 10/100 or 10/100/1000 nTAPs



Optical nTAP

1 Gb, 10 Gb, 40 Gb, or 100 Gb
single or multi-mode optical links



About Network Instruments

Network Instruments, a JDSU Performance Management Solution is an industry leader in application and network management. It provides products that optimize performance and speed problem resolution, helping ensure delivery of critical applications for businesses worldwide. For more information, visit www.networkinstruments.com.



JDSU Performance Management

North American Location

10701 Red Circle Dr. • Minnetonka, MN 55343 • USA
Toll Free: 800.526.7919 • Voice: 952.358.3800 • www.networkinstruments.com

European Location

4 Old Yard • Rectory Lane • Brasted, Westerham • Kent TN161JP • UK
Voice: +44 (0) 1959 569880 • www.networkinstruments.co.uk