

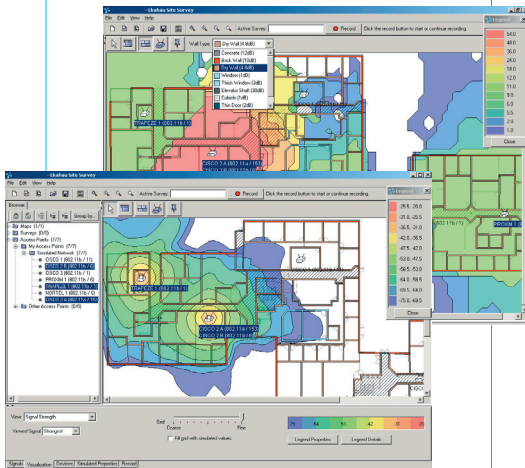


Professional Wi-Fi Design & Verification

Ekahau Site Survey

ESS makes it easy to:

- Determine optimal access point locations and configurations
- Completely understand network performance prior to going on-site
- Perform 802.11 a/b/g RF site surveys quickly and easily
- Discover coverage holes, areas of excessive interference, signal leak
- Analyze the network coverage and performance
- Simulate the impact of changing network settings and network load
- Discover and locate rogue AP's and AP's with no security settings
- Automatically document your network in graphical heat maps, text and tables.



Finally, an easy-to-use visual tool for planning, deploying and verifying 802.11 networks

When deploying "mission critical" wireless networks, such as those designed for Voice over IP usage, network quality and reliability become critical factors. This is especially the case when rolling out a campus-wide network consisting of hundreds of access points.

Ekahau Site Survey (ESS) is the visual, easy-to-use tool for quickly planning, deploying and managing an 802.11 network. Unlike other site survey tools, ESS combines the whole 802.11 deployment into an all-in-one solution: from planning to surveying, and optimization to reporting.

With ESS, you deploy higher quality, error-free networks in less than half the time. No more support calls regarding the wireless access.

Laptop easy, enterprise ready

ESS runs on a standard laptop computer, and a standard network card is used for survey measurements. It is designed for IT managers, systems integrators, service groups – anyone who has to deal with 802.11 installations and management.

Prior to installation, ESS lets you know exactly how many access points you should use, what kind of AP and antenna configuration is optimal, and what your network coverage and performance will look like in the production setting. No more "flooding" the network with expensive access points.

During installation, surveys can be done using a single, "mobile access point", prior to the actual deployment.

After installation, ESS allows you to verify (survey) the network performance after the "real world" traffic starts to flow.

At any time, surveys can be performed easily and quickly, with all 802.11a/b/g access points discovered during each survey. Create easily established benchmarks as you go for future comparisons.



With ESS, you can see the difference

ESS is the first visual site survey tool on the market. It provides state-of-the-art 802.11a/b/g surveying capabilities in a stunning user interface that is well-known for its intuitive, visual approach. The same user interface is used throughout the project from planning to verification. ESS is a vendor-neutral tool that works with all 802.11 access point brands and models and types of network interface cards.

Comprehensive planning

ESS analyzes network performance and simulates how infrastructure changes affect network coverage and performance. Other site survey tools provide only a static view of the performance at the time the survey was made. ESS assumes that **RF is never static and that delivering dynamic "real world" data analysis is essential to maintaining network performance.** What happens when traffic levels spike? What if access points go down? How would moving access points or changing channels affect performance? How could capacity or coverage be increased? ESS provides easy answers to these complicated questions.

Seeing the "blind" spots

When surveying a facility, it's not always possible to visit every room or area (e.g. a hospital with operating rooms that are in use). ESS has the unique capability of filling these areas with accurate signal propagation data. Compare this with competitive tools that fill the areas in a linear manner, which may easily lead to misleading results.

Excellent reporting and tracking

At any point, you can automatically save and print your network plan, survey results, and benchmark metrics as a template-based report. The report includes coverage and performance maps, access point and survey information, installation notes, and more.

See it for yourself

Call your sales representative for a demonstration of this remarkable technology. You've never seen anything like it.

Features

Survey

- Survey all access points in all 802.11a/b/g in one quick yet thorough survey
- Freeze Access Points for pre-deployment surveys
- See survey results in "3-D" with ESS multi-floor capability
- Extensive Network Adapter Support

Analysis

- Find rogue access points
- Complete analysis of network performance: Signal Strength, SNR, Data Rate, Overlap, Roaming, and more
- Analyze it thoroughly: per access point, per network, per channel, or any selected combination
- Multi-path analysis
- Analyze simulated or surveyed data or a combination of both
- Find security leaks by discovering rogue or unlocked access points
- Accurately predict the signals outside survey routes using Fill Grid

Simulation and Optimization

- Channel Simulation - see how changing a channel affects network interference and performance
- Network Load simulation - see how adding more traffic to the network affects interference and performance

- Adapter Simulation - see how the network would work for users having different NICs
- Fail-over simulation - see how the network would perform in case of fail-over

Network Planning

(Ekahau Site Survey Pro or Ekahau Planner Module Required)

- Place simulated access points with a single mouse click
- Select from various wall materials for accurate signal propagation estimation
- Adjust channels, transmission power, AP height
- Use directional or omni antennas
- Customize wall materials and antennas

Reporting

(Ekahau Site Survey Pro or Ekahau Reporter Module Required)

- Create customized reports automatically
- Include access point and survey information, notes, heat maps, and more in comprehensive reports
- Template-based reporting for quick generation of customized, personalized reports

GPS

(Ekahau Site Survey Pro or Ekahau GPS Module Required)

- Use a GPS handheld for automated outdoor surveys

Channel partner contact information:

www.ekahau.com
sales@ekahau.com
info@ekahau.com

West Coast Ekahau, Inc.
12930 Saratoga Avenue
Suite B-8
Saratoga, CA 95070
Tel: 1-866-4EKAHAU
Fax: 1-866-435 2428
sales-americas@ekahau.com

East Coast Ekahau, Inc.
1851 Alexander Bell Drive
Suite 150
Reston, VA 20191
Tel: 1-866-4EKAHAU
Fax: 1-703-860 2028
sales-americas@ekahau.com

Europe Ekahau, Inc.
Tallberginkatu 2
00180 Helsinki, Finland
Tel: +358 20 743 5910
Fax: +358 20 743 5919
sales-europe@ekahau.com

Asia Ekahau, Inc.
Suite 1002
Chuang's Tower
30-32 Connaught Road Central
Hong Kong
Tel: +852 3426 4770
Fax: +852 3426 4061
sales-asia@ekahau.com



© 2000-2006 Ekahau, Inc. All rights reserved. Ekahau™, Ekahau Positioning Engine™, Ekahau Site Survey™, Ekahau T201™, Ekahau Finder™ and the Ekahau logo are trademarks or registered trademarks of Ekahau. Other product and company names may be trademarks or trade names of their respective owners.